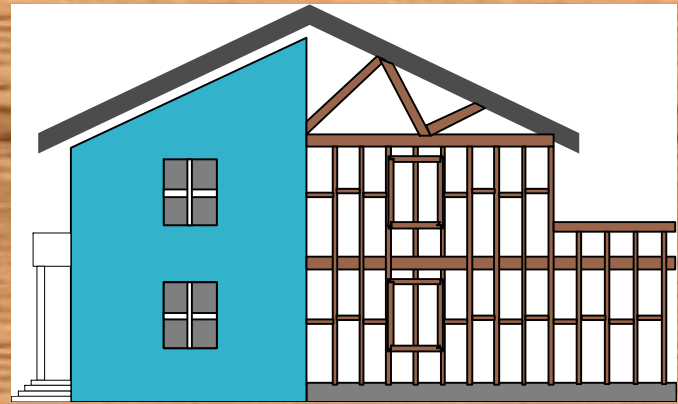
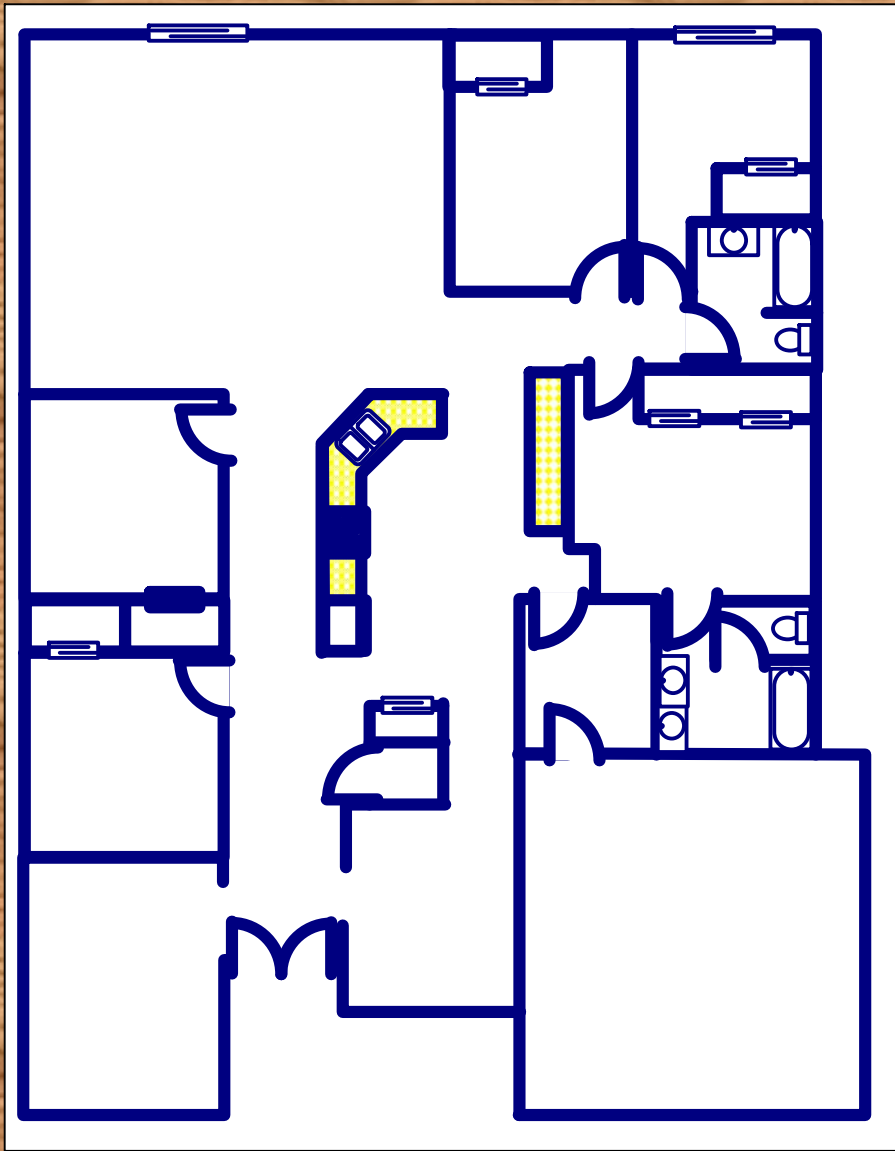




DESIGNING

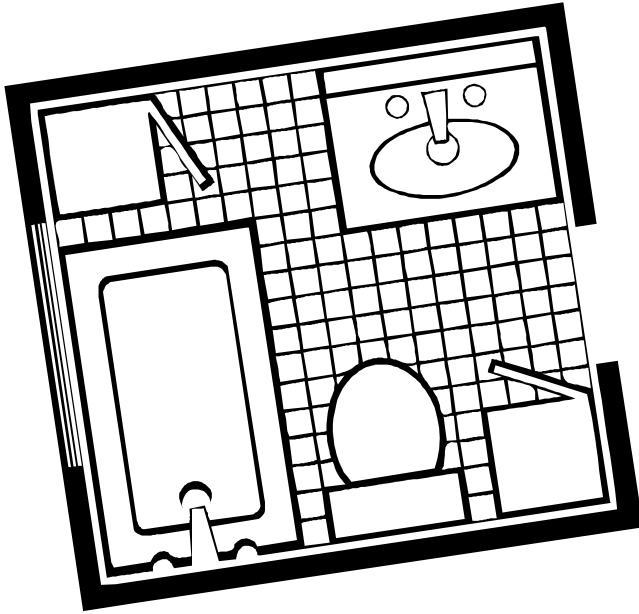
A

HOME



By Nancy L. Wilkinson

Lesson Eight Designing Your Home



Objective: Students will design their home

Materials:

- 1) Several home designs from the newspaper, magazine or homebuilder
- 2) A home design is included on the previous page
- 3) Graph paper

Opener:

When would you want to figure the total square footage of several rooms? (Example: flooring). When would you want to figure the perimeter of a room? (Example: base boards)

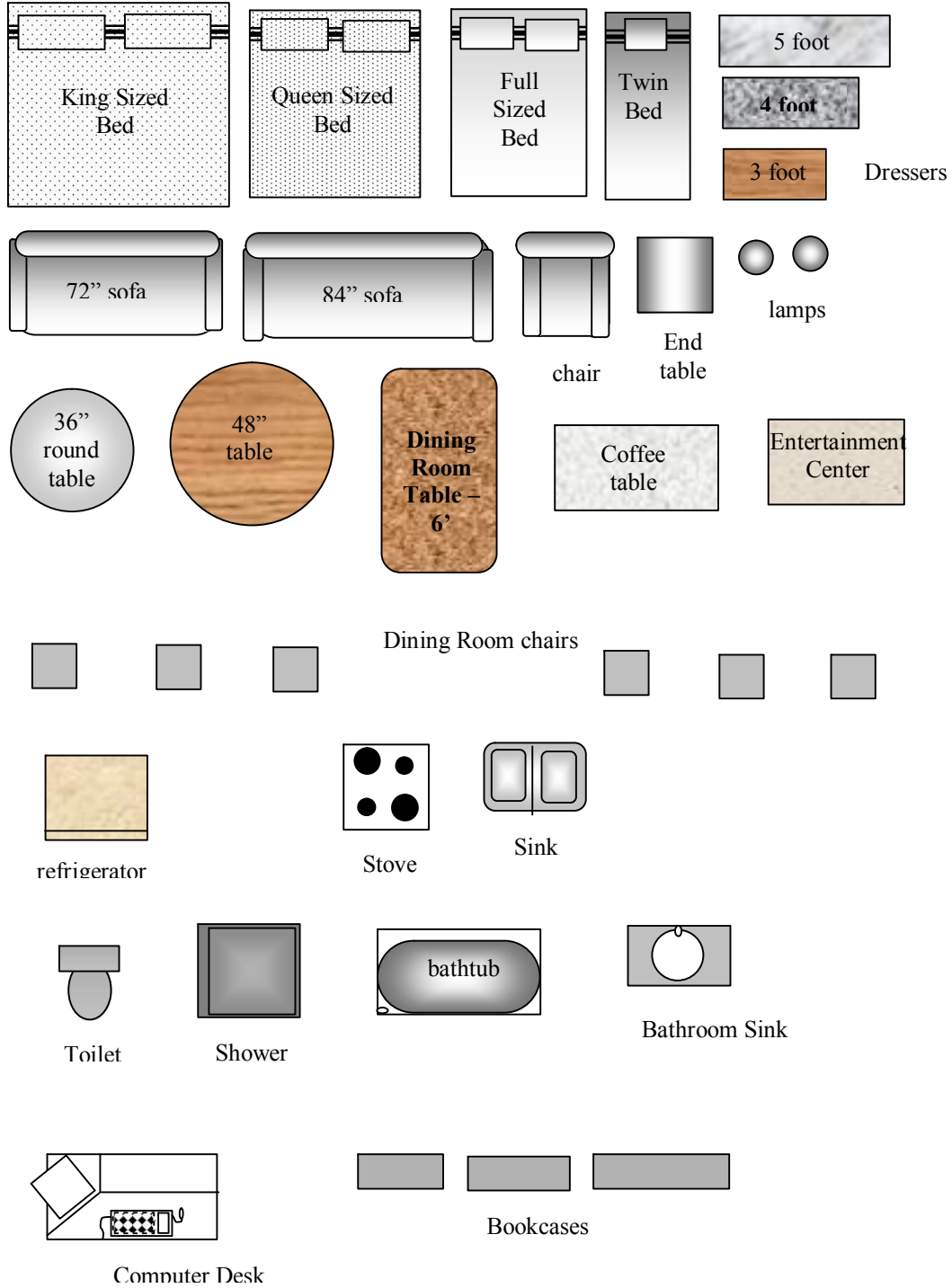
Activity:

- 1) Pass out the graph paper. Explain that the graph paper represents 32' x 42' or each square is 2' x 2'. What is the square footage of one sheet of graph paper? (1344 ft^2) Students will want to use several sheets of graph paper. (*The teacher may decide how many*)
- 2) Students may design their dream home based on the following criteria:
 - a) The home cannot be more than 3500 square feet
 - b) The students should use logical thinking in designing the rooms. Look at the example floor plans.
 - c) The rooms may include furniture. A page with furniture cutouts is included in this book.

Closure:

Students can share their home designs with the class. What makes theirs special?

Furniture Cut-Outs Scale 1 cm = 2 ft



Each square is approximately 1cm x 1cm
Each square is approximately 2' x 2'

